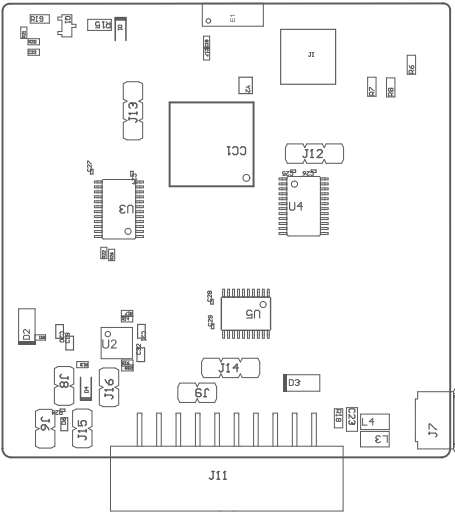
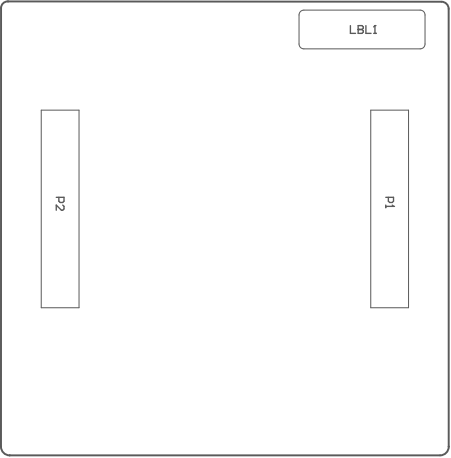


ZZ1 ■These assemblies are ESD sensitive, ESD precautions shall be observed.
 ZZ2 ■These assemblies must be clean and free from flux and all contaminants. Use of no clean flux is not acceptable.
 ZZ3 ■These assemblies must comply with workmanship standards IPC-A-610 Class 2, unless otherwise specified.



COMPONENTS MARKED 'DNP' SHOULD NOT BE POPULATED.
 ASSEMBLY VARIANT: SB

PCB VIEWED FROM TOP SIDE	BOARD #: MCU135	REV: A	SUN REV: 3651e6c8c03151168f4242c270238442f30d729c [Locally Modified]
	TID #: N/A		
PLOT NAME = Top Assembly Drawing	GENERATED : 1/8/2025 11:52:57 AM	TEXAS INSTRUMENTS	



COMPONENTS MARKED 'DNP' SHOULD NOT BE POPULATED.
ASSEMBLY VARIANT: SB

PCB VIEWED FROM BOTTOM SIDE	BOARD #: MCU135	REV: A	SUN REV: 3651e6c8c03151168f4242c270238442f30d729c [Locally Modified]
	TID #: N/A		
PLOT NAME = Bottom Assembly Drawing	GENERATED : 1/8/2025 11:52:57 AM		TEXAS INSTRUMENTS